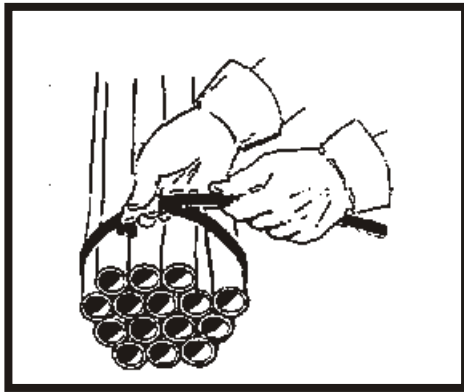


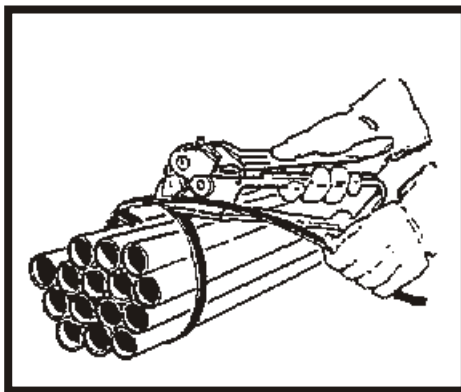
For use with 3/8 through 3/4 steel strapping.



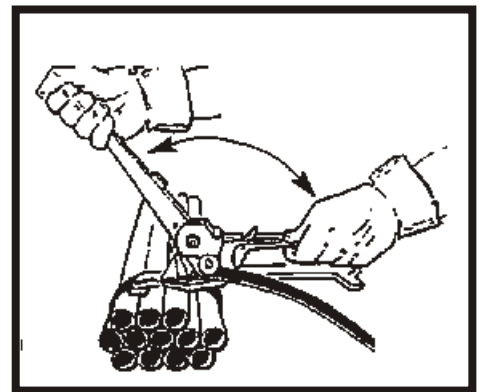
## OPERATING INSTRUCTIONS:



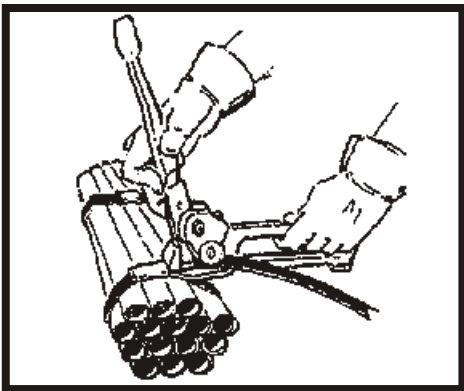
1. Place the strap around the bundle and fit the seal as shown. Bend the lower strap back under the seal, about 2°.



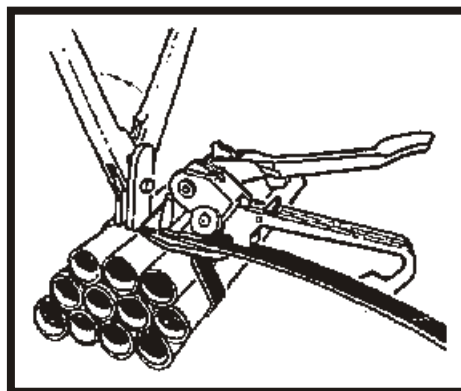
2. Squeeze the handles to lift the feedwheel (#19). Slide the strap through the slot of the breaker nose (#22) and push the tool up against the seal.



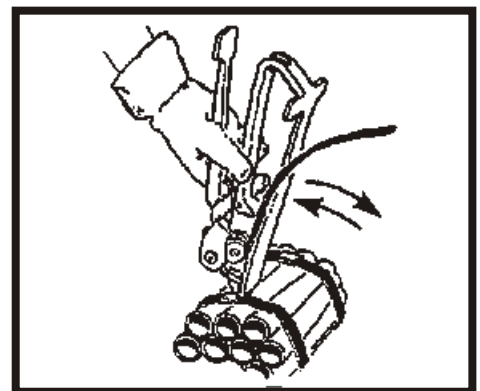
3. Move the handle (#4) forward and backward until the desired tension is reached.



4. When the desired tension is reached, push the handle pawl (#2) forward and move the handle (#4) back to contact the lift arm (#21).



5. Cramp the seal by placing the jaws of the sealer over the seal and pushing the handle together.



6. Move the whole tool forward and backward several times to break the strap.

## **⚠ WARNING**

All parts must be periodically inspected and replaced if worn or broken. Failure to do this can affect a product's operation and can result in personal injury.

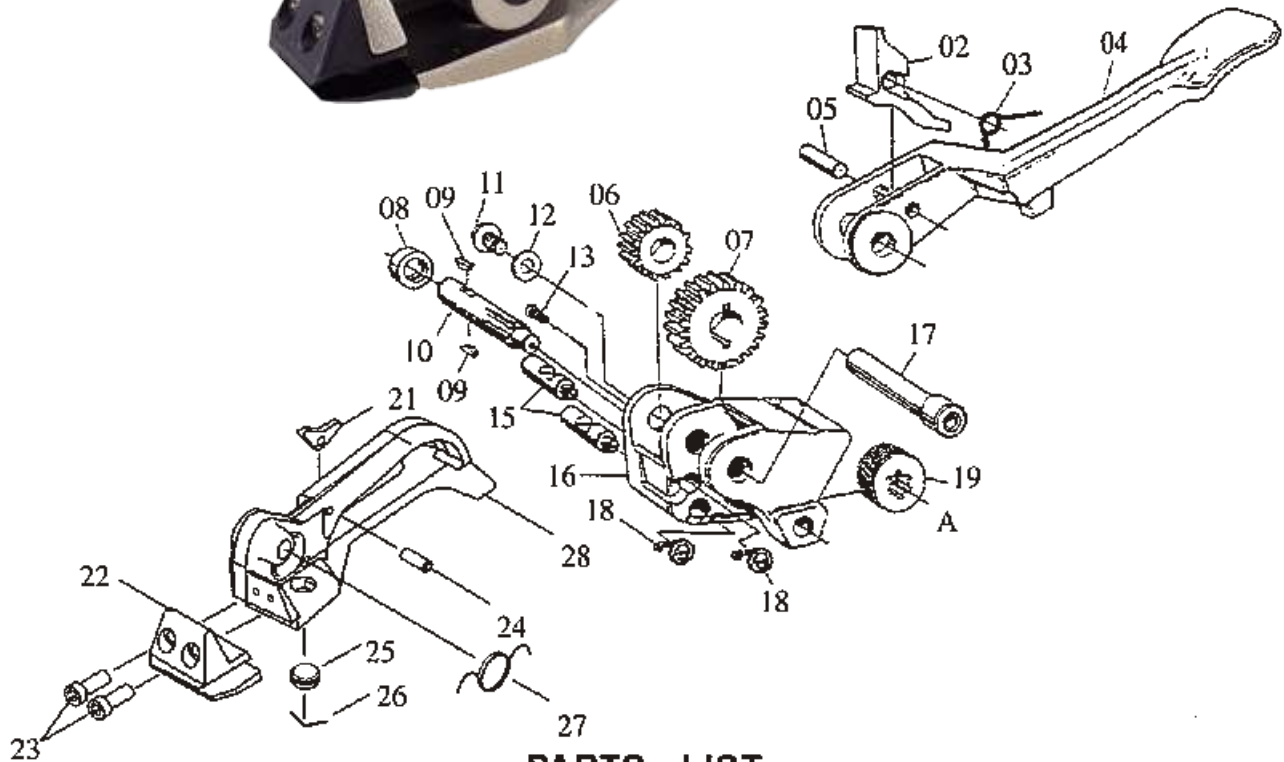
# FEED WHEEL TENSIONER

## TOOL MAINTENANCE

This tool has been thoroughly inspected and tested before shipment. It is designed for Hard wear and long service.

The following simple instructions will aid you in prolonging the serviceability of this tool:

Clean this tool periodically with a wire brush. Apply light machine oil to all moving parts.



## PARTS LIST

PART NO.	DESCRIPTION	Q'TY/TOOL	PART NO.	DESCRIPTION	Q'TY/TOOL
2	Handle Pawl	1	15	Holding Pawl	2
3	Handle Pawl Spring	1	16	Gear Housing	1
4	Handle	1	17	Pivot Pin	1
5	Handle Pawl Pin	1	18	Holding Pawl Spring	2
6	Pinion Gear	1	19	Feedwheel	1
7	Tension Gear	1	21	Lift Arm	1
8	Bushing	1	22	Breaker Nose	1
9	Woodruff Key	2	23	Screw M5x14	2
10	Feedwheel Shaft	1	24	Roll Pin	1
11	Screw M6x10	1	25	Clutch Plug	1
12	Washer	1	26	Plug Pin	1
13	Screw M5x10	1	27	Base Spring	1
			28	Base	1

WHEN ORDERING PARTS, PLEASE SHOW TOOL MODEL, PART NUMBER AND NAME.